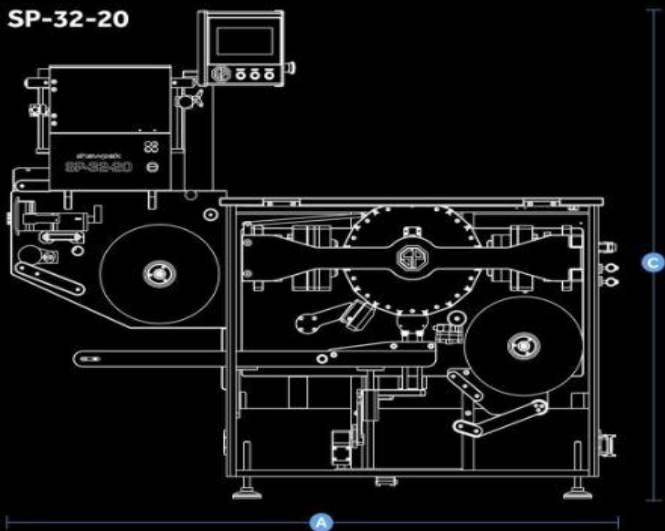


shawpak specifications

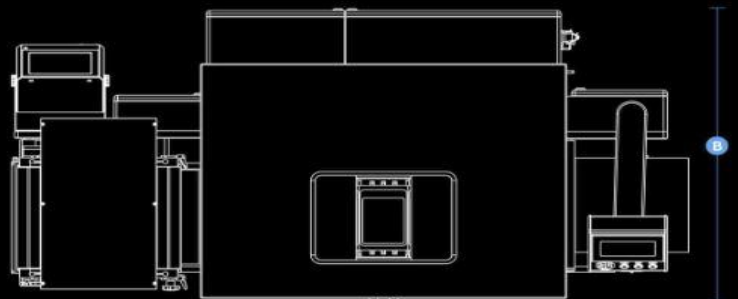
Main Machine	Standard	Option
Servo Index Drive	<input checked="" type="radio"/>	<input type="radio"/>
Forming Head	Standard	Option
Pneumatic Toggle Lock Form Head	<input checked="" type="radio"/>	<input type="radio"/>
Airflex Form Bellows with Manual Pressure Control	<input checked="" type="radio"/>	<input type="radio"/>
Airflex Form Bellows with Digital Pressure Control	<input type="radio"/>	<input type="radio"/>
Manual Form Pressure Control	<input checked="" type="radio"/>	<input type="radio"/>
Digital Form Pressure Control	<input type="radio"/>	<input type="radio"/>
Servo Driven Toggle lock Form Head	<input type="radio"/>	<input type="radio"/>
Sealing Head	Standard	Option
Pneumatic Toggle Lock Seal Head	<input checked="" type="radio"/>	<input type="radio"/>
Airflex Seal Bellows with Manual Pressure Control	<input checked="" type="radio"/>	<input type="radio"/>
Airflex Seal Bellows with Digital Pressure Control	<input type="radio"/>	<input type="radio"/>
Servo Driven Toggle Lock Seal Head	<input type="radio"/>	<input type="radio"/>
Base Web Unwind	Standard	Option
Base Web Manual DC Unwind	<input checked="" type="radio"/>	<input type="radio"/>
Base Web Digital DC Unwind	<input type="radio"/>	<input type="radio"/>
Base Web Edge Detection	<input type="radio"/>	<input type="radio"/>
Base Web Auto Tracking	<input type="radio"/>	<input type="radio"/>
Top Web Unwind	Standard	Option
Base Web Manual DC Unwind	<input checked="" type="radio"/>	<input type="radio"/>
Base Web Digital DC Unwind	<input type="radio"/>	<input type="radio"/>
Base Web Edge Detection	<input type="radio"/>	<input type="radio"/>
Base Web Auto Tracking	<input type="radio"/>	<input type="radio"/>
Auto Print Registration	<input type="radio"/>	<input type="radio"/>
Cutting	Standard	Option
Standard Flying Knife	<input checked="" type="radio"/>	<input type="radio"/>
Multicut Flying Knife	<input type="radio"/>	<input type="radio"/>
Crush Cut	<input type="radio"/>	<input type="radio"/>
Crush Cut Perforation	<input type="radio"/>	<input type="radio"/>
Plunge Knife	<input type="radio"/>	<input type="radio"/>
Thumb Hole Punch (Top Web)	<input type="radio"/>	<input type="radio"/>
Thumb Hole Punch (Base Web)	<input type="radio"/>	<input type="radio"/>
Die Cut with Pack Eject and Trim Separation Unit	<input type="radio"/>	<input type="radio"/>

Outfeed	Standard	Option
Standard 1200mm Outfeed Conveyor	<input checked="" type="radio"/>	<input type="radio"/>
Swan Neck Conveyor (height and length to customer requirements)	<input type="radio"/>	<input type="radio"/>
Overprint and Coding	Standard	Option
Thermal Inkjet Printer	<input type="radio"/>	<input type="radio"/>
Thermal Transfer Printer	<input type="radio"/>	<input type="radio"/>
In Line label Applicator	<input type="radio"/>	<input type="radio"/>
Flexographic Print Unit (single colour)	<input type="radio"/>	<input type="radio"/>
Bench Top	Standard	Option
Bench Top with Loading Station	<input checked="" type="radio"/>	<input type="radio"/>
Bench Top to Customer Requirements	<input type="radio"/>	<input type="radio"/>
Open Top (for automated loading)	<input type="radio"/>	<input type="radio"/>
External Finish	Standard	Option
Hard Anodise	<input checked="" type="radio"/>	<input type="radio"/>
Powder Coat White	<input type="radio"/>	<input type="radio"/>
Powder Coat to Customer Requirement	<input type="radio"/>	<input type="radio"/>
Aluminium Polished Mirror Finish	<input type="radio"/>	<input type="radio"/>
Control	Standard	Option
7" TFT Colour Touch Screen	<input checked="" type="radio"/>	<input type="radio"/>
Bench Top Light Curtain	<input type="radio"/>	<input type="radio"/>
Data Logging to SD Card	<input type="radio"/>	<input type="radio"/>
Data Logging via Ethernet Connection	<input type="radio"/>	<input type="radio"/>
Cabinet and Guarding	Standard	Option
Machine Feet	<input checked="" type="radio"/>	<input type="radio"/>
Machine Feet with Castors	<input type="radio"/>	<input type="radio"/>
Machine Feet with Castors and Quick Lift Air Jack	<input type="radio"/>	<input type="radio"/>
Integration	Standard	Option
Robot Loading	<input type="radio"/>	<input type="radio"/>
Production Line Integration	<input type="radio"/>	<input type="radio"/>
Weigh Hopper Integration	<input type="radio"/>	<input type="radio"/>

SP-32-20



Model	Max Web Width	Max Index	Max Pack Depth	Machine Dimensions		
				A	B	C
SP-22/20	220mm	200mm	80mm	1350mm	860mm	980mm
SP-32/20	320mm	200mm	80mm	1350mm	960mm	980mm
SP-42/20	420mm	200mm	80mm	1350mm	1060mm	980mm
SP-42/25	420mm	250mm	100mm	1450mm	1060mm	1030mm
SP-52/20	520mm	200mm	80mm	1350mm	1160mm	980mm
SP-52/25	520mm	250mm	100mm	1450mm	1160mm	1030mm
SP-62/20	620mm	200mm	80mm	1350mm	1260mm	980mm
SP-62/25	620mm	250mm	100mm	1450mm	1260mm	1030mm
Model X				Add 350mm		
Model P				Add 200mm		



SP-32-20X

